

# THINK BIG

||||| GET SMALL |||||



 KARSAN

**jest+**

# LESS IS MORE.

Jest+ provides optimum passenger capacity during off-peak hours. Discover the advantages of compact Jest+ and start saving now.



## Less Fuel Cost

Jest+ is very effective in terms of fuel consumption. In addition, you will save up to 70% fuel cost per passenger with Jest+ during off-peak hours by eliminating redundant capacity of big buses.



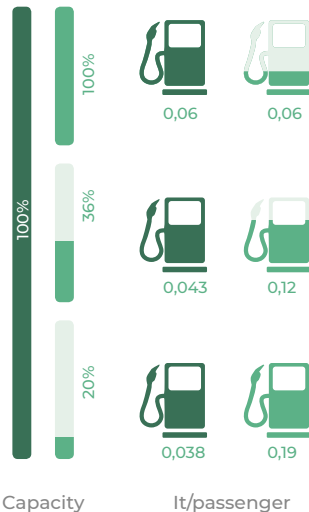
5,8 mt Jest+ | 22 Passenger Capacity



8 mt Bus | 58 Passenger Capacity



12 mt Bus | 105 Passenger Capacity



PEAK HOURS OFF-PEAK HOURS



## Less Maintenance Cost

Jest+ is a budget friendly solution with low maintenance costs. Moreover, by adding Jest+ to your fleet, you will use your big buses rarely, so they will also be sent to maintenance less and their lifetime will increase.



## Less Investment Cost

With lower acquisition cost compared to big busses, Jest+ proves that it's a profitable investment from the first day.

\*With the assumption that all passengers get on the bus at the first stop and get off on the last. All lines are 10 kms.

JEST+  
THE SMALLEST  
MEMBER  
OF YOUR FLEET  
A DESIGN  
MARVEL.

#### **Jest+, Also Known as a Small City Bus**

Designed to feed the main lines of city transportation, Jest+ can maneuver in narrow streets easily thanks to its compact size. Therefore, your transportation network can expand to every location in the city.



## + Unique and Innovative Design

Jest+ respects and sustains the historical infrastructure of the city. Having a perfect look, Jest+ combines the design lines of the new age with its compact style, adapting to the texture of the city with its dimensions. Therefore, it raises the city's image to a higher point and becomes one of its icons.

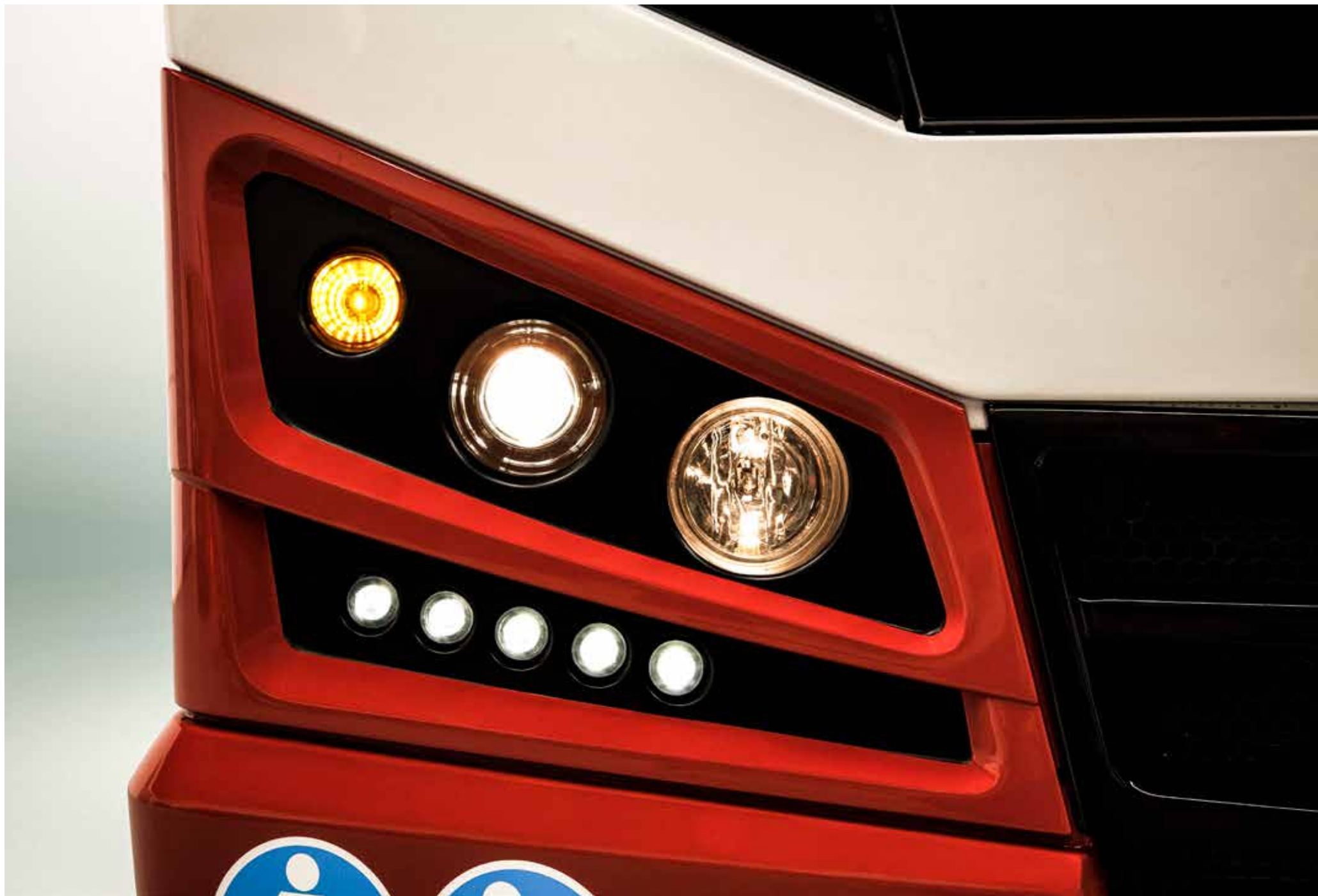
## + Wide Viewing Angle

Jest+ commands the entire road with its panoramic windshield. Nothing will be missed either in heavy traffic or while cruising.

## + Attractive Front Design

Unique dynamic front design of Jest+ brings an aesthetic stance to the road. Stylish LED daytime running lamps support this stance by attracting attention.







### + Wheelchair Access Ramp

With the easily foldable ramp integrated to low floor, Jest+ provides smooth access and makes getting on & off very practical.

### + Wide Door Clearance

Jest+ prevents time loss with double swing doors, while passengers are getting on & off.

### + Original Low Floor

Getting in Jest+ is as easy as walking on the straight road. The low floor allows passengers to get in by just a half step. Thanks to these advantages, parents with strollers and the elderly get on and off Jest+ easily.

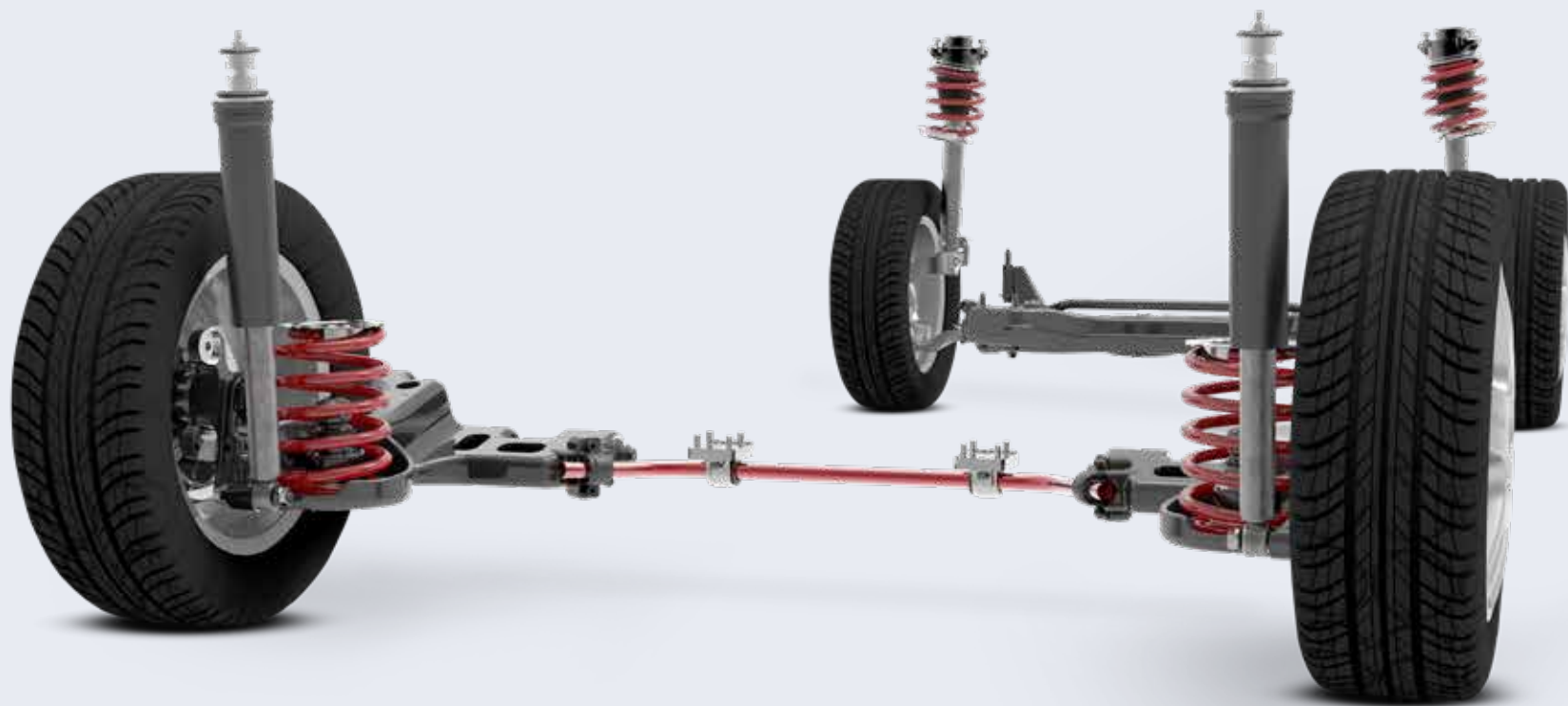
### + Cataphoresis Coating

Jest+ has 10-years anti-corrosion warranty. Cataphoresis coating used in Jest+ chassis provides advanced corrosion resistance while preventing rust formation.





PUBLIC  
TRANSPORTATION  
MEETS  
HOME COMFORT.



### **+ 4 Wheel Independent Suspension**

Until Jest+, passenger and driver comfort has not been expected in public transport.

With 4-wheel independent suspension, Jest+ reduces road vibration and increases passenger comfort like an automobile.



### + LED Light Path

Jest+ exceeds your expectations with LED lighting that enhances visibility and safety, while giving an aesthetic appearance to the interior. For passengers, traveling with Jest+ is very pleasurable.

### + Enhanced Roof Isolation

Every detail is considered in Jest+, thus passengers are kept away from traffic noise and enjoy their rides.

## + Front Looking Passenger Seats

Jest+ offers plastic and plastic with pad seat options to satisfy your comfort standards. Front looking seats are ideally positioned for passengers. This position allows them to feel more comfortable during their rides.

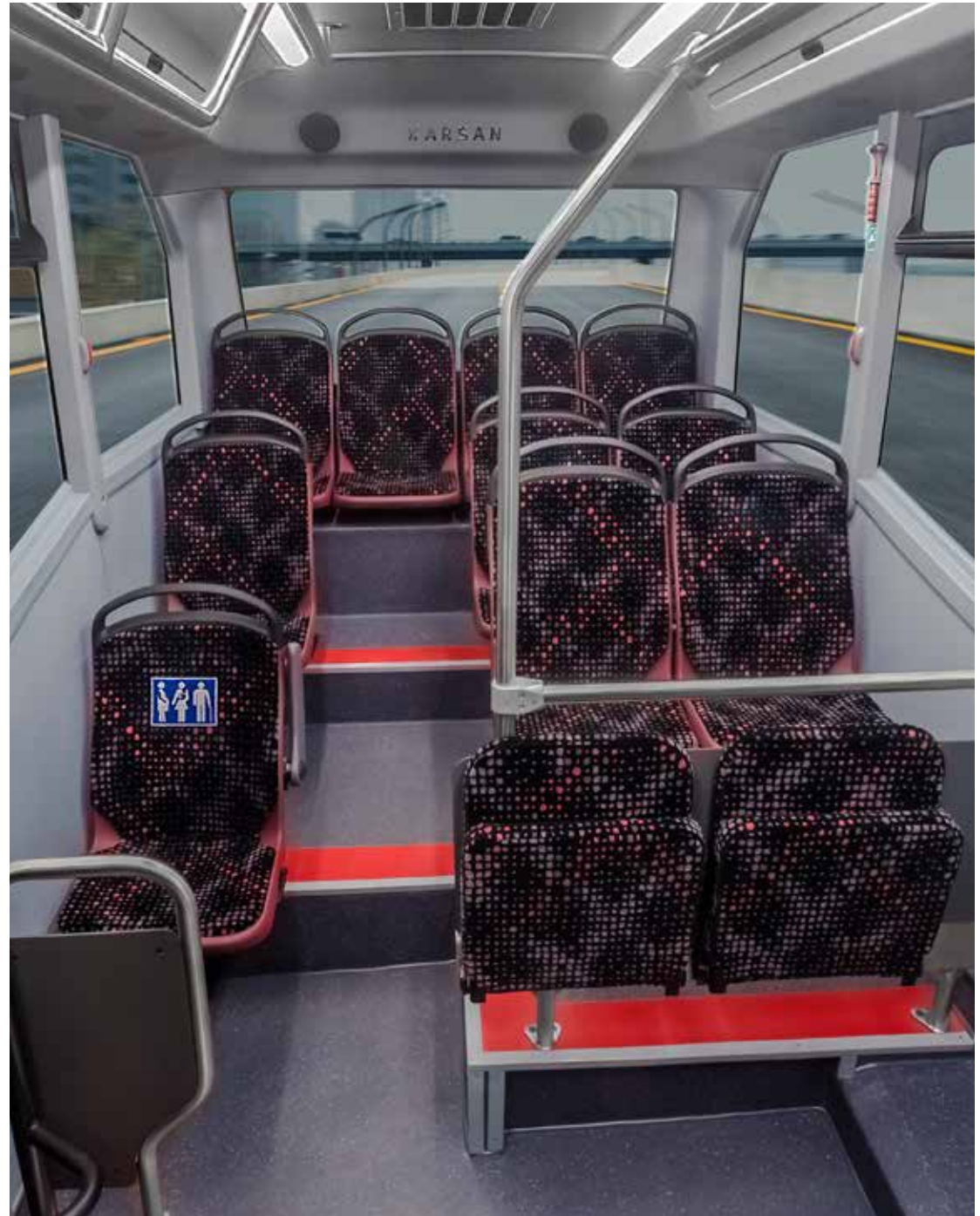
## + Passenger Seat Alternatives

With passenger seat layout options provided with Jest+ and Jestronic, the most appropriate seating layout can be selected and vehicle's interior becomes more ergonomic.

- 9 Fixed Seats + 4 Folding Seats
- 10 Fixed Seats + 4 Folding Seats

## + Driver Seat

The driver is always comfortable thanks to the 4-way adjustable driver seat with armrest.





+ Aluminum Alloy Wheels



+ Validator Preparation



+ Electric Heated Mirrors & Sidewalk Mirrors



+ Electric Roof Hatch



+ Passenger USB Ports



+ Tiltable & Telescopic Electrohydraulic Steering Wheel



## + Multimedia System

All features for an appealing public transport vehicle are gathered in Jest+. Technologies which ease the driving and transform the ride into pleasure, are always at your service.

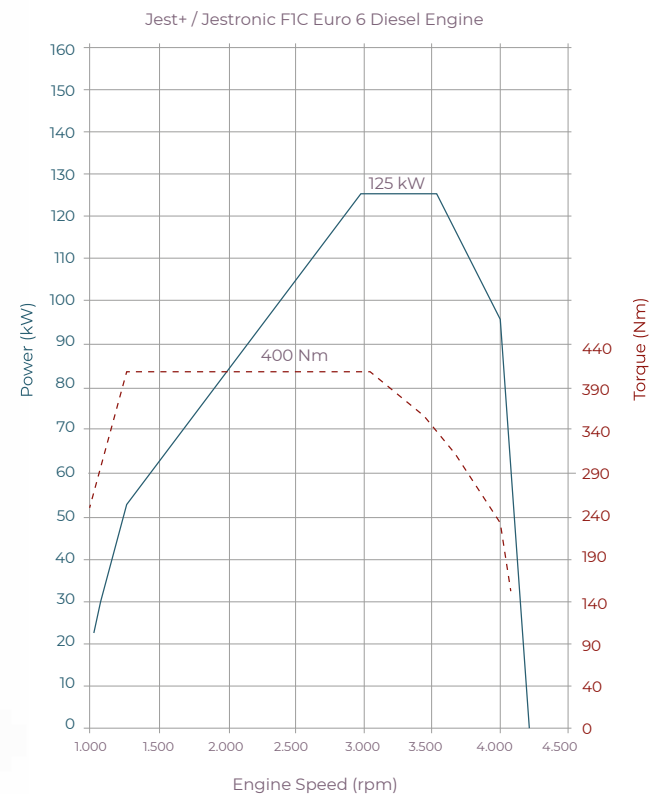
- Rear View Camera and 7" LCD Screen
- Camera Monitoring and 1TB Storage + Wi-Fi
- Navigation\*
- Radio + USB Port + SD Card + Bluetooth
- 4 Speakers

## + Powerful Air Conditioner

Too cold or too hot, no weather conditions can affect the passengers. Also with the additional standard driver A/C in Jest+, you can focus on driving.

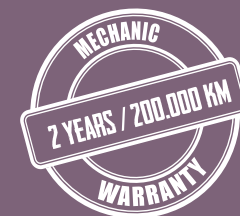
\*Provided with camera system.

THE ONLY  
COMPETITOR  
IS ITSELF, AS IT  
IS THE BEST IN  
PERFORMANCE.



## + High Performance Engine

Now is the time to rule the roads. The engine of Jest+ with high torque and acceleration, enables a perfect driving performance together with silence and robustness. 3.0 liter diesel engine, climbs easily to steep ramps while maintaining low fuel consumption levels. With 125 kW (170 HP) power and 400 Nm torque, it is durable in continuous use. Although it has superior performance in all conditions, exhaust emissions are lowered to satisfy Euro 6 levels to protect nature with the Ad-Blue additive.



Mechanic warranty is limited to 2 years or 200.000 km (whichever finishes first).





### **+ High Climbing Capability**

Jest+ can climb up ramps like going on straight roads. Its high climbing capability gives confidence even on steepest ramps; eliminating the difficulties of stop and go.

### **+ Superior Maneuverability**

Narrow streets or underpasses are no more a problem. With its minimum turning radius, you can maneuver with Jest+ easily like driving an automobile.

### **+ High Passenger Capacity**

The passenger capacity of Jest+ is designed to provide comfort even when the vehicle is loaded with maximum capacity. In this way, Jest+ is always by the driver's side with its power, meeting expectations in the best way.





*Jestronic*

SMALL AND  
EFFICIENT  
WITH MORE  
DRIVING COMFORT.

With its automatic transmission, Jestronic advances to comfort class and brings extra convenience to the driver with its features. Are you ready to discover its innovative perspective?

*Automatic  
Transmission*





## Digital Cluster

5" digital screen enables easy monitoring of the vehicle and critical information such as speed, gear, fuel consumption and AdBlue® level is always accessible.

## 6-Speed Automatic Transmission

Jestronic, decreases the difficulties of staying in traffic all day long. Its 6 speed automatic transmission provides comfortable shifting therefore, driver can only concentrate on traffic and passengers.





**THINK BIG  
GET SMALL.**



Low Floor

Automatic Transmission

Less Maintenance Cost Less Fuel Cost

Wheelchair Access Ramp

Less Investment Cost

High Passenger Capacity

High Durability

High Performance

High Durability

Low Floor

Independent Suspension

Automatic Transmission

High Maneuverability

Less Maintenance Cost Wheelchair Access Ramp

High Passenger Capacity Less Investment Cost

Low Floor

# HUMAN FOCUSED SAFETY TECHNOLOGIES

Jest+ offers technological active and passive safety systems in order to protect its valuable driver and passengers.



ELECTRONIC STABILITY  
PROGRAM



ANTI-LOCK BRAKING SYSTEM



DRAG TORQUE CONTROL



ELECTRONIC BRAKEFORCE  
DISTRIBUTION



TRACTION CONTROL SYSTEM



BRAKE ASSIST SYSTEM



HILL START AID (HILL HOLDER)



VEHICLE DYNAMIC CONTROL





## BIG CHANGES START WITH SMALL STEPS

The mini-bus emerged as part of economic priorities 60 years ago in the friendly lands of Anatolia. It began to spread to modern cities in the 1980's and continues to grow as more cities increase their sustainable transportation network. Jest is designed to change the outlook of public transportation in many countries and to challenge the perceptions.

Upgrading to Jest develops a collective travel model in modern cities reducing the need for passenger cars. Jest accomplishes this both with its comfort and unique features. Jest provides solutions to transportation issues with new generation technology, and becomes the source of happiness for communities.

# KARSAN... FROM PAST TO PRESENT

1966



Karsan's adventure began in 1966 with 269 independent entrepreneurs.



In the first 15 years, it continued to work as a part supplier for Original Equipment Manufacturers (OEMs).

1981



From 1981 onwards, it began manufacturing J9 minibuses for Automobiles Peugeot. Later, it manufactured the first minivan in collaboration with Peugeot.

2018



Now Karsan manufactures Jest Electric to conserve nature and future generations, to keep pace with dynamic historical cities and make life easier.

2017



In 2017, Jest has been developed by considering increased customer expectations and relaunched as Jest+ with a new face.



Karsan's factory, located in Hasanağa, Bursa, Turkey, having 90.000 m<sup>2</sup> of indoor space on a total area of 200.000 m<sup>2</sup>, has a capacity of manufacturing 65.000 vehicles/year. Today, in its modern facilities Karsan has been producing for more than 50 years for the world's leading brands and its own brand.

1998



In 1998, Kiraça Group purchased the majority of Karsan's shares. And the company became the leader in terms of commercial vehicle exports of Turkey.

2006



In 2006, Karsan manufactured J9 Premier, which was completely its own product. In the following year, it established strategic alliances with Hyundai, Renault and Citroen.

2009



In line with its vision updated in 2009 as "Limitless Transportation Solutions", Karsan developed the V1 project in response to New York's Taxi of Tomorrow tender.

2013



Recently, Karsan became one of the 6 finalists in the prototype design contest for a next generation delivery vehicle that will replace 180,000 vehicles currently available at US Postal Service. Additionally, it established a strategic partnership with Morgan Olson, a leader in business transportation.

2011



In 2013, it re-developed its product portfolio with its own vehicles, namely Jest, Atak and Star. Furthermore, it has entered into new agreements with leading companies such as Hyundai, Industry Italiana Autobus and Bozankaya.



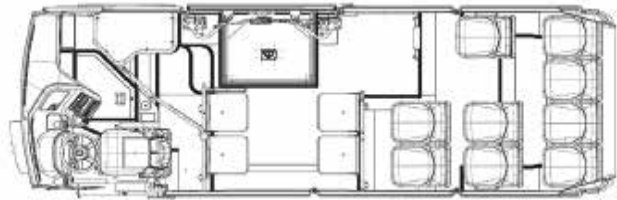
Starting to manufacture buses in 2011, Karsan manufactured the first big bus for Rome Municipality.

TECHNICAL SPECIFICATIONS

Vehicle Type	Jest+	Jestronic
Vehicle Category & Class	M2 category, Class A	
Powertrain System		
Drive Type	Front Wheel Drive (FWD), 4x2	
Engine Type	FPT F1C - Turbo Diesel Intercooler	
Emission Level	Euro VI	
Number of Cylinders	4	
Engine Volume (cc)	2.998	
Max. Power (kW&hp)	125 & 170	
Max. Torque (Nm)	400	
Transmission	Manual Gearbox - 6 Speed	Automated Gearbox - 6 Speed
Performance		
Top Speed (km/h)	154 (without speed limiter)	
Turning Radius (Kerb to kerb) (mm)	6.800	
Gradeability (%)	25	
Suspension		
Suspension System	4WIS: Four-Wheel-Independent-Suspension	
Front & Rear Axle	Independent: Helical Springs + Telescopic Shock Absorbers + Anti-Roll Bar	
Brake System		
Front & Rear Brakes	Hydraulic & Disc	
Capacity		
Fuel Tank Capacity (lt)	80	
Ad-Blue Tank Capacity (lt)	25	
Dimensions		
Overall Length (mm)	5.845	
Overall Width (mm)	2.055	
Overall Height (mm)	2.630 (without A/C) & 2.800 (with A/C)	
Interior Height (mm)	1.945 (min) & 2.185 (max)	
Front Overhang (mm)	1.200	
Rear Overhang (mm)	895	
Wheelbase (mm)	3.750	
First Step in Height (mm)	270	
Door clearance (mm)	1.200	
Tires & Rims		
Tire & Rim Sizes	215/75 R16C & 6J x 16	
Body		
Body Type	Monocoque space frame	
Corrosion Resistance	Cataphoresis coating & Under coating	
Electrical System		
Battery (Volt & Ah)	12V - 105A	
Alternators (Volt & A)	14V - 210A	

PASSENGER SEAT LAYOUTS	Class A
9 Fixed Seats + 4 Folding Seats	x
10 Fixed Seats + 4 Folding Seats	x
Plastic type seat	x
Plastic type seat with pad	x

Class A buses are limited by 22 passenger capacity including standing passengers (ECE-R107)



9 Fixed Seats + 4 Folding Seats



10 Fixed Seats + 4 Folding Seats

FEATURES

DESIGN

Exterior Design	Mainline	Midline	Highline
High Beam & Low Beam Lights	S	S	S
LED DRL ( Daytime Running Lamps)	S	S	S
Front Fog Lamps	-	S	S
Rear Fog Lamps	S	S	S
Rear Clearance Lamps	O	O	O
16" Alloy Wheels	O	O	S
Tinted Side Glasses & Transom Windows	-	-	S
Overtinted Side Glasses & Transom Windows	-	S	O
Driver Door	S	S	S
Outward Swing Passenger Door	S	S	S
Brake Lamps	S	S	S
Manual Access Ramp	S	S	S
Body Colored Bumpers	S	S	S
Spare tire	S	S	S
Passenger Compartment			
Ø 30 mm Yellow Handrails	S	S	S
Ø 35 mm Stainless Steel Handrails	O	O	O
2 Stop Buttons on Handrails	S	S	S

TECHNOLOGY

Driver Compartment			
JESTRONIC (Automatic Transmission)	O	O	O
Engine Room Fire Warning System	O	O	O
5" Digital Cluster	S	S	S
Navigation*	O	O	O
Rear Parking Sensors	-	S	S

Camera Systems

Camera Pack 1 LCD on Dashboard 7", Rear View Camera	O	O	O
Camera Pack 2 DVR (1 TB), LCD on Dashboard 7", Rear View Camera, Front, Driver, Inside, Service Door Cams	O	O	O

Video & Audio Systems

Radio + USB Port + Bluetooth	S	S	S
2 Speakers	S	S	-
4 Speakers	O	O	S

Electrical Systems

Battery 12V - Single	S	S	-
Battery 12V - Double	O	O	S

Passenger Compartment

Digital Clock & Temperature Indicator	S	S	S
Digital Clock & Temperature Indicator with Stop Sign	O	O	O
USB On Left Sidewall	-	S	S
Internet Access Infrastructure (Wi-Fi Router)	O	O	O

Line Systems

Tachograph Preparation	S	-	-
Digital Tachograph	O	S	S
Smart Tachograph	O	O	O
LED Destination Panels (Front + Side + Rear)	O	O	O
Roof Mounted Destination Panel (Front Only)	O	O	O
Ticket Validator Preparation for Front Luggage Area	O	O	O

\* Provided with camera system

COMFORT

Heating & Cooling System	Mainline	Midline	Highline
Roof Mounted Passenger A/C Unit 12KW	S	S	S
Roof Mounted Passenger A/C Unit 14KW	O	O	O
Driver A/C Unit	S	S	S
Under Seat Heater	S	S	S
Pre-heater	O	O	S

Mirrors & Windows

Manual Roof Hatch	S	S	S
Electric Roof Hatch	O	O	O
Electric & Heated Side Mirrors	S	S	S
Sidewalk Mirror On Right	S	S	S
Electrical Driver Window	S	S	S
Heated Side Glass (Front right)	S	S	S
Heated Driver Side Window	O	O	O
Heated Windshield	O	O	S
Sliding Front Right Window	O	O	O
Manual Sun Visor - Driver (Front)	S	S	S

Interior Lights

Driver Area Illumination	S	S	S
Passenger Door Lights	S	S	S
Passenger Compartment Illumination (Simple lamp)	S	-	-
Passenger Area LED Light Path	O	S	S

Driver Compartment

Tilttable & Telescopic Hydraulic Steering Wheel	S	S	S
Remote Controlled Central Locking System	S	S	-
Remote Controlled Central Locking System W Square Key	-	-	S
4 Way Adjustable Driver Seat	S	S	S
Driver Seat Arm Rest	S	S	S
Driver Overhead Bin	S	S	S
Glove Box	S	S	S
Cash drawer	S	S	S
Reverse Gear Buzzer	O	O	O
Semi-closed driver cabin (with hand luggage area)	S	S	S

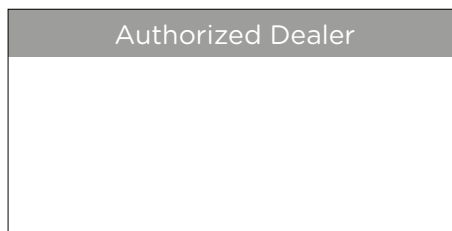
Passenger Compartment

Wheelchair Traveling Area	S	S	S
Seat plan without seat belt (Class A)	S	S	S
Plastic Passenger Seats	S	S	S
Plastic Passenger Seats with pad	O	O	O
Billboard	-	S	S

SAFETY

ESP - Electronic Stability Program	S	S	S
EBD - Electronic Brake Force Distribution	S	S	S
ABS - Anti-lock Braking System	S	S	S
TCS - Traction Control System	S	S	S
DTC - Drag Torque Control	S	S	S
BAS - Brake Assistant System	S	S	S
HSA - Hill Start Aid	S	S	S

S = Standart  
O = Optional



All information and images included in this brochure are based on the technical specifications that are applicable on the printing date of the brochure. All features provided are standard or optional depending on different versions of the vehicles. In the scope of continuous product improvement policy, Karsan always reserves its right to make changes in the specifications without providing any notification to third parties. This brochure does not constitute an offer to sell vehicles.